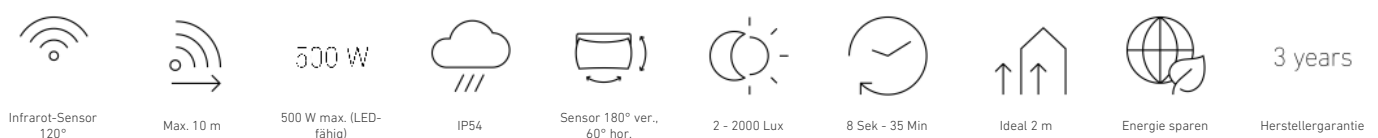
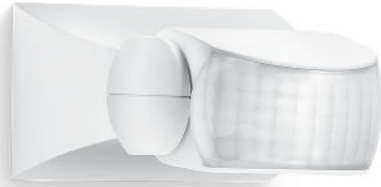


Motion detector

IS 1

white
EAN 4007841 600310
Article number 600310



Function description

Targeted detection and attractive price. Infrared motion detector IS 1, for indoors and out, ideal for targeted coverage of small areas, 120° angle of coverage, reach up to 10 m, selectable time and twilight threshold, sensor turns through 30° and tilts through 180° for exact adjustment of the detection zone.

Technical specifications

| | | | |
|----------------------------|---|---|--------------------------------|
| Dimensions (L x W x H) | 120 x 80 x 50 mm | LED lamps < 2 W | 16 W |
| Manufacturer's Warranty | 3 years | LED lamps > 2 W < 8 W | 64 W |
| Settings via | Potentiometers | LED lamps > 8 W | 64 W |
| With remote control | No | Capacitive load in µF | 88 µF |
| Version | white | Technology, sensors | passive infrared, Light sensor |
| PU1, EAN | 4007841600310 | Mounting height | 1,80 – 3,00 m |
| Type | Motion detectors | Mounting height max. | 3,00 m |
| Application, place | Indoors, Outdoors | Optimum mounting height | 2 m |
| Application, room | outdoors, front door, all round the building, terrace / balcony, courtyard & driveway | Detection angle | 120 ° |
| Colour | white | Angle of aperture | 40 ° |
| Colour, RAL | 9001 | Sneak-by guard | No |
| Includes corner wall mount | No | Capability of masking out individual segments | Yes |
| Installation site | wall, ceiling | Electronic scalability | No |
| Installation | Surface wiring, Wall, Ceiling | Mechanical scalability | No |
| IP-rating | IP54 | Reach, radial | r = 3 m (9 m ²) |
| Protection class | II | Reach, tangential | r = 10 m (105 m ²) |

Motion detector

IS 1

white
EAN 4007841 600310
Article number 600310



Technical specifications

| | |
|--|---------------------|
| Ambient temperature | -20 – 50 °C |
| Material | Plastic |
| Mains power supply | 230 – 240 V / 50 Hz |
| Switching output 1, resistive | 500 W |
| Switching output 1, number of LEDs / fluorescent lamps | 4 pcs. |
| Fluorescent lamps, electronic ballast | 430 W |
| Fluorescent lamps, uncorrected | 500 VA |
| Fluorescent lamps, series-corrected | 500 VA |
| Fluorescent lamps, parallel-corrected | 500 VA |
| Switching output 1, low-voltage halogen lamps | 500 VA |

| | |
|----------------------------|---------------------|
| Switching zones | 260 switching zones |
| Twilight setting | 2 – 2000 lx |
| Time setting | 8 s – 35 Min. |
| Basic light level function | No |
| Main light adjustable | No |
| Twilight setting TEACH | No |
| Constant-lighting control | No |
| Interconnection | Yes |
| Type of interconnection | Master/master |
| Interconnection via | Cable |

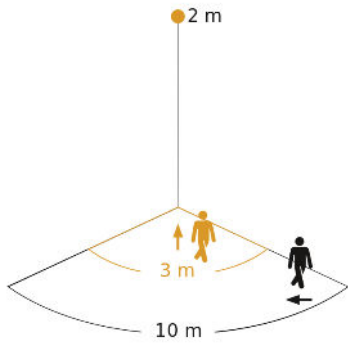
Motion detector

IS 1

white
 EAN 4007841 600310
 Article number 600310

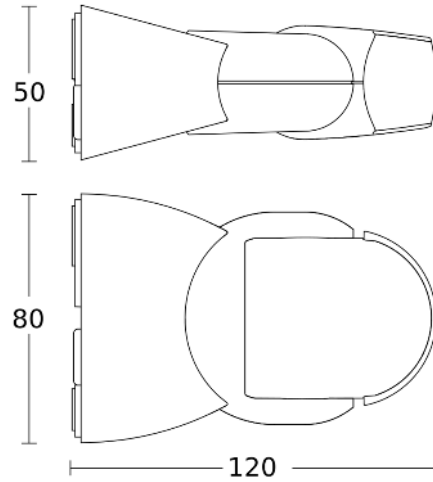


Detection Zone

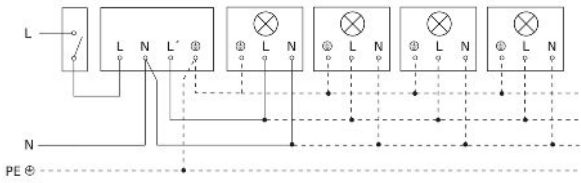


Possible mounting height: 1,80 m – 3,00 m
 Orange: radial
 Black: tangential

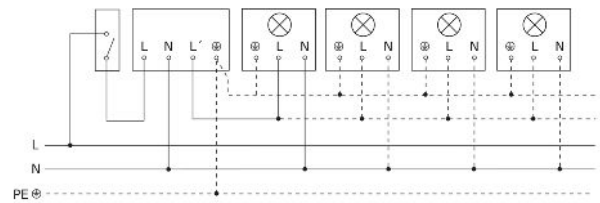
Dimension Drawing



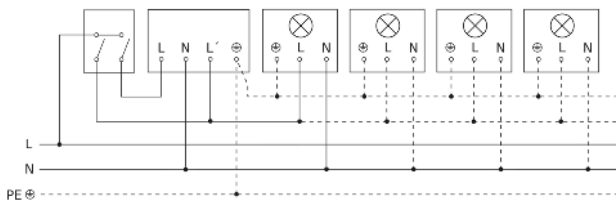
Light without neutral conductor



Light with neutral conductor



Connection using two-circuit switch for manual and automatic operation



Connection of 4-fold push-button coupler to DALI2 APC

